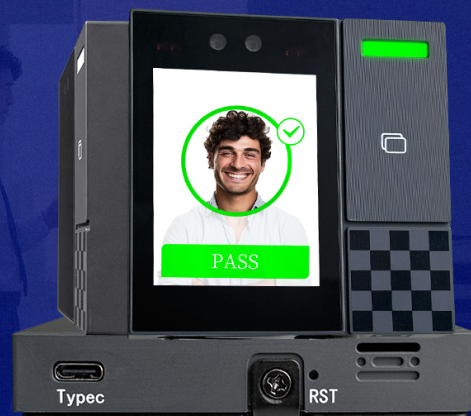


# HF-SLEEKPRO 2.8 INCH LINUX SYSTEMS

## FACE TIME AND ATTENDANCE ACCESS CONTROL

「 Linux-based system and face recognition algorithm 」

「 Compact product design 」



Built-in core CPU



Live detection



WiFi module



Card recognition



Face recognition



Linux system



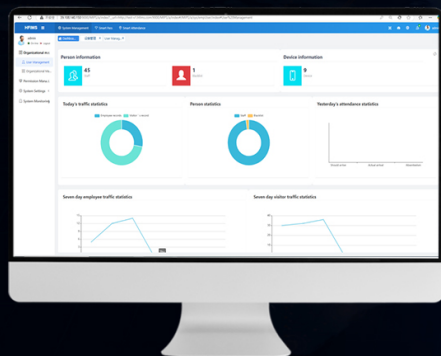
Small and light



Software

## HF-Sleekpro Face Time and Attendance Access Control

HFSECURITY Sleekpro product is compact in design and perfect in function, adopting high-performance domestic AI terminal chip, equipped with a Linux open-source operating system with face recognition AI algorithm, providing high-efficiency and high-accuracy face recognition function, as well as card function, password recognition and other identity verification functions, to meet the actual needs of access control, time and attendance and card punching in the entrance and exit scenes.



Attendance Software System



## CLOUD ATTENDANCE ACCESS CONTROL SOFTWARE

- Employee Management
- Visitor Management
- Blacklist Management
- Attendance Record
- Passage Records
- Capture Records

More >>>

Product Website Links

Youtube Video Links



## Specification

Processing unit	High performance ARM processor
Operating system	Linux operating system
Swipe Module	13.56MHz band card recognition, support ISO/IEC 14443 TypeA, support the optional 125KHz ID card recognition function
Ethernet	100Mbps Ethernet port
Screens	2.8-inch LCD screen
Touch method	Capacitive touch

## Performance

Recognition distance	0.3~1.5 meters
Face angle	30 degrees left and right, 30 degrees up and down
Recognition time	Less than 0.5 seconds
Face capacity	2000
Recording capacity	50000

## Interface

Power Input	DC12V/1A
Network interface	1 x 100M Ethernet port
Wiegand Interfaces	1 Wiegand output
Door Magnetic Interface	1 Door Magnetic Input
Door opening interface	1 Door opener input
Relay Interface	1 Relay output
USB port	1 USB 2.0 port (type-C)

Camera parameters

Video camera	Hige Binocular camera, visible light and near infrared, supports live detectionh performance ARM processor
Effective pixel	1 million effective pixels
Signal-to-noise ratio	≥50db(AGC OFF)
Wide dynamic	100db, ISP algorithm face partial exposure

General parameters

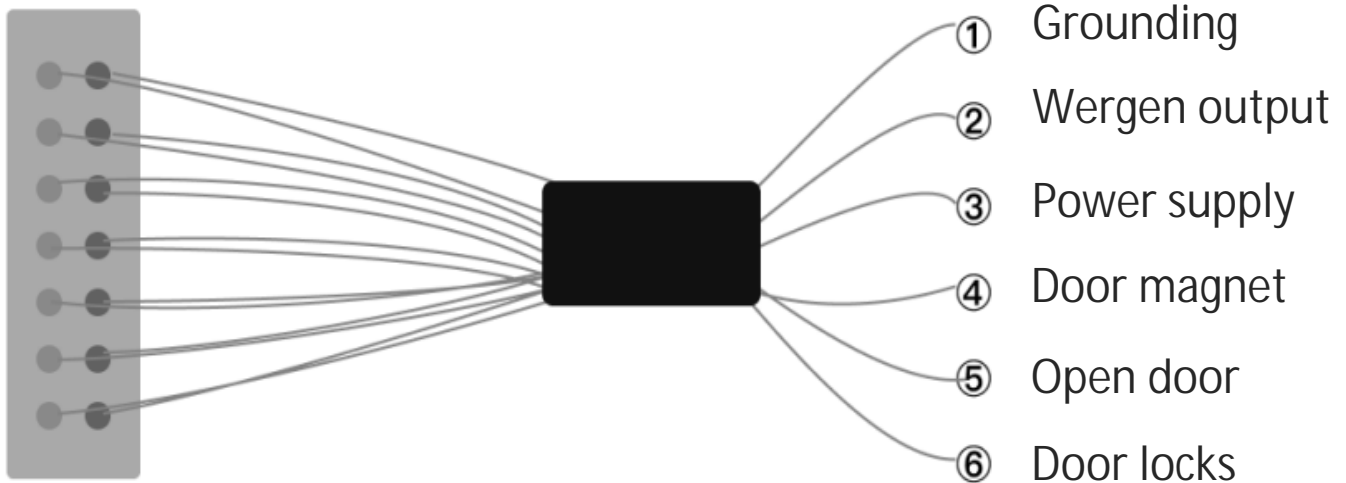
Operating temperature	-10℃ to +50℃
Operating humidity	10% to 90% relative humidity, non-condensing
Equipment power	10W (MAX)
Protection class	IP42
Supply electricity	DC12V/1A
Product Size	86*86*17 (mm)

COMPACT DESIGN

Size: 86mm \* 86mm \* 17mm



## Interface definition



Serial number	Name	Markings	Clarification
1	Network port	White: RJ45_RX- Orange: RJ45_RX+ Yellow: RJ45_TX- Green: RJ45_TX+	For wired network communication
2	Power supply	Red: 12V Black: GND	DC12V 1A power input
3	Door locks	Green: NO White: COM Blue: NC	Used as a door opening signal output
4	Functional interface	White: WGO_D0 Orange: WGO_D1 Black: GND Brown: OPEN Red: SENSOR	WGO: Weingarten output for external access control as read head OPEN: for external door opener button SENSOR: for external door magnet sensor

Head-quarter: Chongqing Huifan Technology Co., Ltd.

Tel:86-23 6730 5242

◆ D-13,Dongli International Building Longtousi, Yubei District, Chongqing, China.

Branch: Shenzhen BIO Technology Co., Ltd.

Tel:86-755-25846186

◆ HuafanGroup,No.32,JianlongIndustrialZone,Henggang,LonggangDistrict,Shenzhen



www.hfsecurity.cn



www.hfeco.com

@ info@hfctv.com

Huifan Technology Co.,Ltd

f Huifan Technology

HF\_Security

Chongqing-huifan-technology



YouTube