



X40Y

AI SENSELESS

Face recognition time & attendance camera

Embedded with deep learning intelligent face algorithm, it supports front-end face matching, detecting, tracking, snapping, scoring, feature extraction, and mobile face recognition, and outputs the best face matching results.



Video playback function



Human movement recognition



IP66



IR fill light



Warning



Embedded deep learning intelligent face algorithm, supports front-end face matching, supports detection, tracking, capture, scoring, feature extraction, and recognition of moving faces, and outputs the best face matching results.

Supports multiple face capture modes: quick capture, optimal capture, face deduplication and other capture modes.

Supports simultaneous face detection, snapshots and panorama snapshot uploads for 32 people

Supports multiple parameter settings such as face detection area setting, list management, alarm link age, comparison record, etc.

Supports intelligent face track in exposure mode, and faces are still clearly visible under strong backlight.

Supports infrared and white light fill lights, automatically switches between color and black modes, and enables uninterrupted capture day and night.

4 megapixels, 2.8-12mm zoom lens supports auto focus, F1.6 ultra-large aperture.

Support Onvif, GB28181, GA/T1400, MQTT, HTTP and other protocols.

Support 1-channel alarm input/output, 1-channel audio input/output, built-in MIC/speaker

Power supply DC 12V/2A, support POE (802.3at)

MULTIPLE FACE CAPTURE MODES

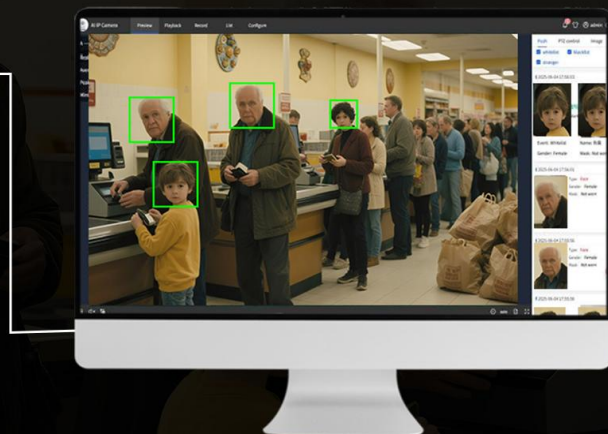
Quick capture

Face deduplication

Face detection

snapshotting

Panoramic view



PRODUCT INTRODUCTION



POE



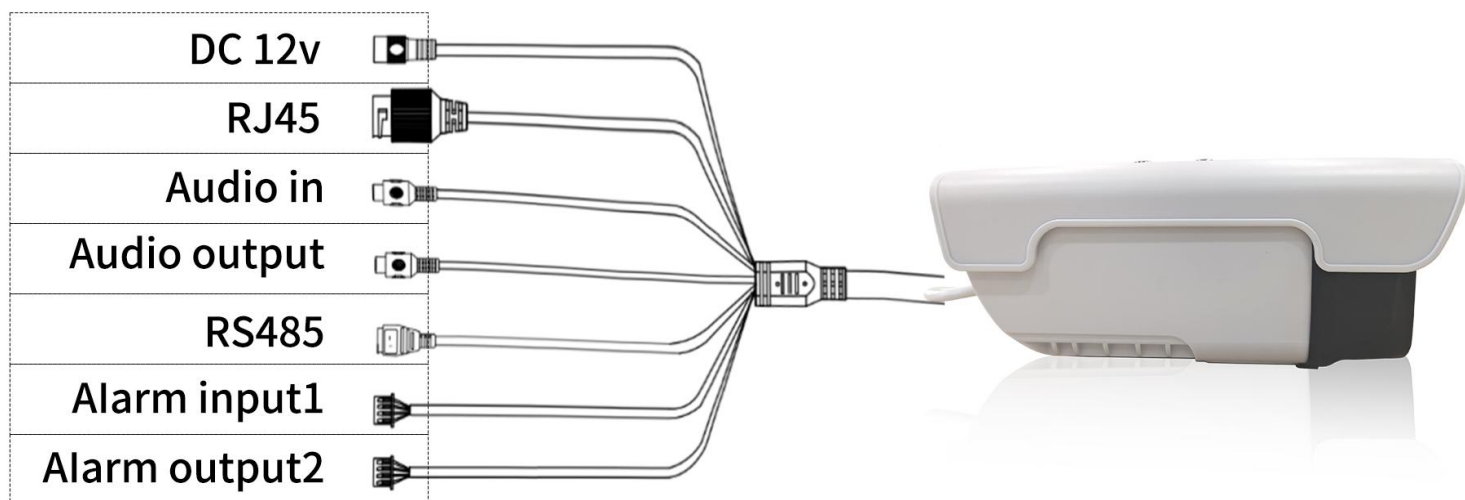
DC



Built-in speakers



INTERFACE DEFINITION



Youtube Links :

Website Links:

Product Model	X40Y
Motherboard performance	Computing power 1.0Tops, memory: 8Gbit, flash memory: 8GB EMMC
Sensor Type	1/3"CMOS
Lenses	
Lenses type	Electric zoom
Field of view	(H)103.4° (W) - 29.3°(T) (V)54.3° (W) - 16.5°(T) (D)124.2°(W) - 33.6° (T)
aperture	1.6-3.3±10%
focal length	2.8-12mm
Auto Focus	support
repairOptical properties	
Infrared light	Maximum fill light distance 40 meters
White light	Maximum fill light distance: 10 meters
Image characteristics	
Image Settings	Brightness, contrast, saturation, sharpness
Minimum illumination	0.001Lux (color mode), 0.001Lux (black and white mode), 0Lux (fill light on)
White Balance	Automatic/Manual
Strong light suppression	support
Backlight compensation	support
Noise Reduction	Support 2D/3D digital noise reduction
Wide dynamic range	support
Signal-to-Noise Ratio	56db
Gain Control	Auto/Shutter Priority/Gain Priority/Manual
Coding Featuressex	
Video compression standards	H.265, H.264, H.264H, H.264B, MJPEG
Resolution	Stream 1: 2560x1440 1920x10801280*720 Stream 2: 704x576 960*544 640*360 320*184 Stream 3: 640*360 704x576 960*544 320*184
Frame rate	25fps, 30fps
Bit rate control	CBR/VBR
Default bitrate	4096kbps
Bit rate adjustment range	Main and auxiliary 30Kbps~16Mbps continuously adjustable
Audio compression standards	G.711A, G.711U, G.726
Network characteristics	
Network Protocol	HTTP,TCP,RTSP,RTP,UDP,RTCP,SMTP,FTP,DHCP,DNS,DDNS , PPPoE,IPv4,UPnP,NTP
protocol	Onvif, GB28181, GA/T1400, MQTT, HTTP

achievementEnergy characteristics

General Behavior Analysis	Area Invasion, Tripwire Invasion, Headcount
Alarm function	Video blocking alarm, motion detection alarm, sound and light linkage alarm, custom alarm voice.
Video recording mode	Manual recording, event detection recording, timed recording, alarm recording
OSD information overlay	Time, channel title, device name, support customization
Day and night mode	Daytime and nighttime, support timed switching, manual switching, automatic switching
Privacy Masking	Supports 4 locales
Mirror	Support 90°/180° image flip
ROI	support

Smart Features

Detection Type	Face capture, recognition, mask detection
Number of tests	Supports up to 32 targets to be detected and captured simultaneously
Face detection area	support
Face Detection	Supports face detection, face frame tracking, optimal capture, fast capture, face deduplication, face enhancement, face tracking exposure
Detection range	Supports adjustable minimum/maximum detection targets
List library capacity	10,000 name lists and 70,000 snapshot recognition records
Image Type	Face picture, single-inch photo, panoramic photo
Image Format	JPG

Interface Characteristics

Network Interface	1 RJ45, 10/100M adaptive Ethernet port
Power interface	DC12V /2A (-15%~+10%)
Alarm interface	1 in 1 out
Audio Interface	1 audio input/1 audio output (RCA connector),Built-in MIC/speaker
SD card interface	Maximum capacity 256GB
Reset	Software reset

Physical properties

Installation	Wall mount, ceiling mount
Operating voltage	DC12V /2A (-15%~+10%)\POE(802.3at)
Power consumption	<8W
Operating temperature	-30 --+60
Operating humidity	0% ~95% RH (non-condensing)
Protection level	IP66
Product size	198*105*85mm
Packing size	276*162*148
weight	650g



www.hfsecurity.cn



www.hfteco.com

Head-quarter: Chongqing Huifan Technology Co., Ltd.

♥D-13,Dongli International Building Longtousi, Yubei District, Chongqing, China.

Branch: Shenzhen BIO Technology Co., Ltd.

♥Room 301-305,No.30, Jianlong Industrial Zone, Henggang, Longgang District, Shenzhen



Info@hfctv.com



Huifan Technology Co.,Ltd



Huifan Technology



HF_Security



Chongqing-huifan-technology



YouTube