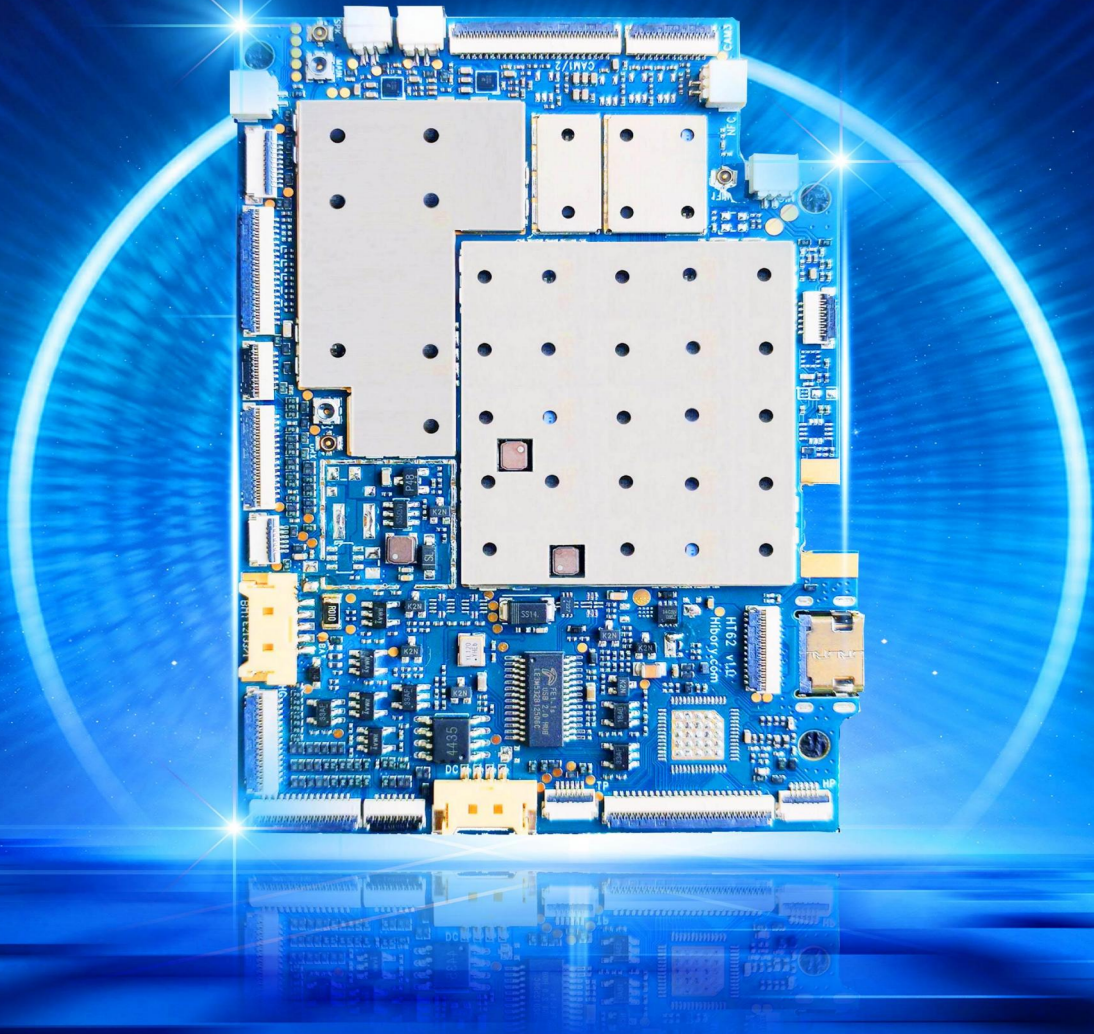


HF62

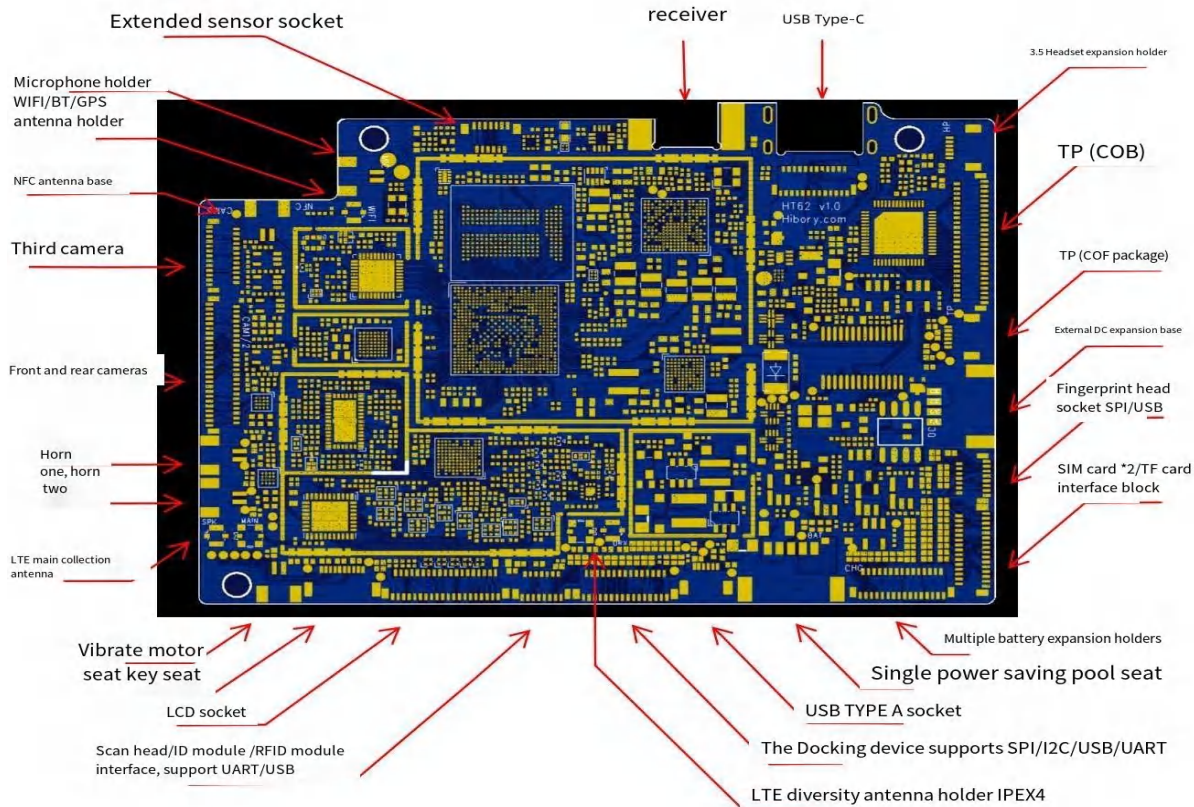
Motherboard Specification



HF62

HF62 is a motherboard developed based on MTK octa-core 64-bit processor MT6762, supports LTE-FDD/LTE-TDD/WCDMA/TD-SCDMA/EVDO/CDMA/GSM network,supports VoLTE and dual SIM dual standby (4G+4G Mode); support WIFI 802.11 ac/a/b/g/n, BT5.0 LE short-range communication, support GPS/GLONASS/BEIDOU multiple standard satellite positioning.

HF62 provides a wealth of peripheral interfaces, which can be widely used in industry equipment in various fields such as industrial tablet, smart car, smart access control, smart home, and smart medical.



Specification

CPU	MT6762
Memory	optional RAM+ROM: 2+16/3+32/4+64/6+128 Flash: eMMC 5.1, 8G/16G/32G/64G
OS	optiona Android 11/10/9/8/7
LCD	optional Display 5'/6'/7'/8'/9'/10'/11'/12" Lane MIPI ect optional up to 280*800 /1024*768/2048*1536/2560*1600 IPS
Card	optional ID card / UHF RFID / IC card /NFC/ 13.56Mhz Support ISO/IEC 14443 Types A and B, JIS X 6319-4, ISO/IEC 15693, ISO/IEC 18000-3
Battery	optional 10000mAh/20000mAh/30000mAh
GPU	IMG GE8320@650MHz
Fingerprint Sensor	optional FBI Capacitive Fingerprint Sensor/ optional FAP10/FAP20/FAP30/FAP45/FAP50/FAP60/SPI/USB interface
Slots	SIM*2 , TF: 36GB/64GB/128GB/256GB
Power Supply	optional PD fast charge , DC interface, Typc C
USB Ports	optional USB TYPE-C* 2 standard TYPE-C docking station USB TYPE-A * 1
Camera	optional Rear camera up to 21MP and optional AF optional Front camera up to 21MP optional The secondary camera up to 21MP, and can be connected to a soft decoding scan head

Communication

WIFI	Support 802.11 ac/a/b/g/n
FM	FM Receiver
Bluetooth	BT5.0

GNSS	GPS/BEIDOU/GLONASS A-GPS
LTE	Support 4G/3G/2G Support 3GPP R9 CAT4 FDD and TDD FDD: Max 150Mbps (DL), 50Mbps (UL) TDD: Max 150Mbps (DL), 50Mbps (UL)
Supported frequency bands	FDD_LTE: Band1/2/3/4/5/7/8/12/17/20/28 TDD_LTE: Band34/38/39/40/41B WCDMA: Band1/2/5/8 TD-SCDMA: Band34/39 GSM/GPRS/EDGE: 850/900/1800/1900MHz CDMA2000/EVDO: BC0 Other frequency bands can be customized
Audio	Sampling rate : 8kHz to 192kHz Sampling format:8/16/24-bit, Mono/Stereo Audio (FR,HR,EFR,AMR FR,AMR HR and Wide Band AMR)

Peripheral interface

TP	optional COB and COF TP
Audio Ports	Speaker*2 3.5mm headphone jack Dual MIC
Button Ports	optional 3*2 key matrix
Sensor Ports	optional Interface Sensor Extensio , optional flash, fill light extension
Docking Ports	optional SPI/I2C/USB/UART Interface, can be plugged in MCU , support printing, etc.
Video	Decode: HEVC 1080P@30fps/40Mbps Encode: H.264 1080P@30fps
Sensors	optional direction, light sensing, distance, geomagnetic, gyroscope sensor
Docking Ports	optional SPI/I2C/USB/UART Interface, can be plugged in MCU , support printing, etc.
Dedicated module interfaces	Support UART/USB interface

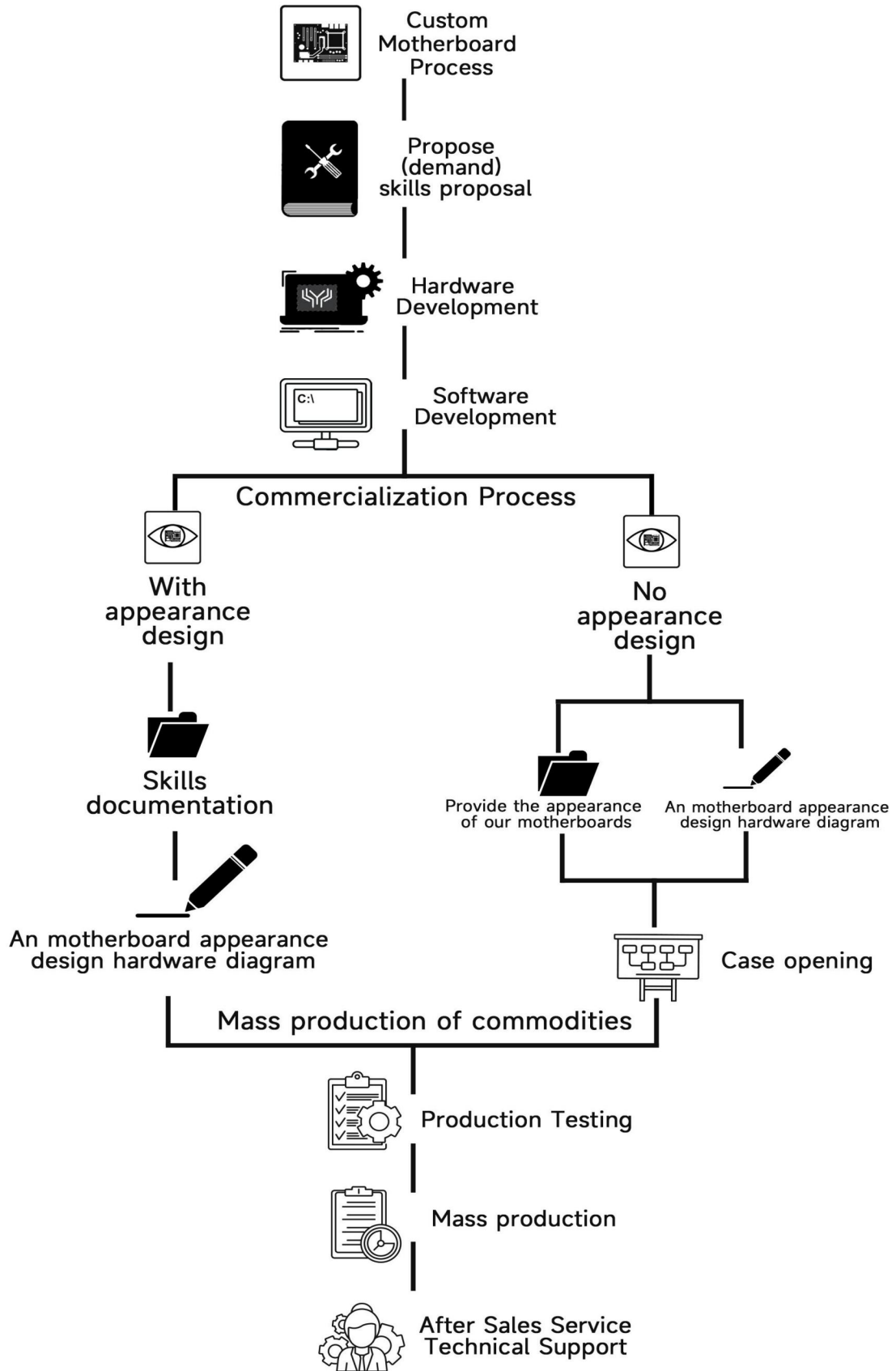
Application Scenarios



The application scenarios are represented in a 2x6 grid of blue boxes with white text and representative images:

- Consumer Electronics:** Image of a tablet device on a stand.
- Smart home security system:** Image of a Windows-style smart display.
- Medical device and equipment part:** Image of a medical X-ray machine.
- Telecommunication:** Image of a network interface device.
- Robotics and Autonomous system:** Image of a small white and red humanoid robot.
- Automobile Electronics:** Image of a car's infotainment system.

Customization Process



Head-quarter: **Chongqing Huifan Technology Co., Ltd.**

📍D-13, Dongli International Building Longtousi, Yubei District, Chongqing, China.

Branch: **Shenzhen BIO Technology Co., Ltd.**

📍Room 301-305, No.30, Jianlong Industrial Zone, Henggang, Longgang District, Shenzhen

📧 Info@hfctv.com

📺 [Huifan Technology Co.,Ltd](#)

📘 [Huifan Technology](#)

🐦 [HF_Security](#)

🌐 [Chongqing-huifan-technology](#)

