



# HF-XCore Series

## MULTI-FUNCTION APPLICATION HF-XCORE SERIES

FACE RECOGNITION/OBJECT DETECTION/PERIMETER ALARM/BEHAVIOR STANDARDIZATION/MAN-MACHINE NON-INSTITUTIONALIZATION



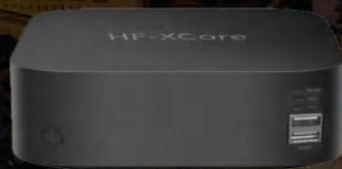
Fire Fighting



Bright Kitchen  
Bright Stove



Community



HF-XCORE SERIES



Gas Station



Urban Management



Production Safety  
Supervision

## HF-XCore Series

Multifunctional security biometrics



# BASIC ALGORITHM



Face Recognition



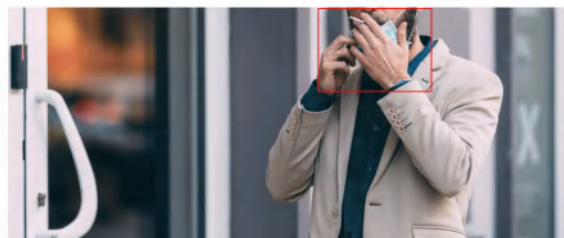
Human-Machine Unstructured



Perimeter Alert



Item Detectio



Behavior Normalization

# INDUSTRY ALGORITHM



Fire Fighting



Bright Kitchen  
Bright Stove



Community



Gas Station



Production Safety  
Supervision



Urban Management

## System Parameters

Main Processor

High performance embedded microprocessor

Operating System

Embedded Linux

## Device Access

Video Stream Input

Video resolution:1920 x 1080 (2 million ), 2560 x 1440 ( 4 million), 3840 x 2160 (8 million )

Video Decoding Type

H .264 / H .2 65

Face Capture Machine

Maximum support for 8 /16/ 32-channel capture machine access (the capture machine must support the GA / T 1400 protocol)

## Smart Prameters

Human Face Recognition

Capture rate 99%  
Capture false capture rate< 1%  
Whitelist identification pass rate> 99.5 % \_  
Recognition false recognition rate: < 0.5%  
The largest base library: 300,000 people portrait library

Human Face Recognition

Capture rate 9 5 %  
Capture false capture rate < 1%

Motor Vehicle

Capture rate 90 %  
Capture false capture rate < 1%

Non-motor Vehicle

Capture rate 9 5 %  
Capture false capture rate < 1%

License Plate

Capture rate 9 5 %  
Capture false capture rate < 1%  
Recognition rate 9 5 %

## Interface parameters

Network Interface	2, 10 OM/1000 M adaptive Ethernet , RJ 45 interface
Alarm Input/Output Interface	4 switches
Audio Input/Output	1 way
Front/ RearUSB Interface	Front 1 USB2.0 , 1 USB 3.0; Rear 2 USB 2.0
R S485	2 way
Reset Button/Power LED ( PWR)	1
Running Indicator Light (RUN)	1 pc, two-color (red+green)

## System functions

Running Indicator Light (RUN)	Passage of employees at entrances and exits; key personnel list control and identification alarm, stranger identification, etc.
Video Structured	Capture, attribute analysis, license plate recognition of faces, human bodies, motor vehicles, non-motor vehicles, license plates, etc.
Algorithm Warehouse Management	algorithm package upload via web, API , Meg Connect protocol, support algorithm package installation , uninstallation, deletion
Network Protocol	TCP/UDP/HTTP/MULTICAST/DHCP/FTP/NTP/HTTPS/RTSP /GAT1400 etc.
Dual Network Port	Are supported : 1.multiple addresssettings 2.load balancing 3.Active/standby mode
Log Query	Inquiry, search and display of face-human-machine non-card capture information

## Environmental equirements

Operating Temperature	-30 ~ + 70
Storage Temperature	-30 ~ + 70
Relative Humidity	1 0% ~ 90%RH, non-condensing

## Other

Power Supply	DC12V±10%, 2A
Structure	metal case
Dimensions (L, D, H)	229 × 193 × 49 (mm)
Weight	< 2KG



## ALGORITHM OPTIONAL, FAST DELIVERY

Choose the algorithm you need from multiple algorithm types



Standard Algorithm Package	Support 30 AI algorithms such as face, structure, item detection, perimeter, behavior class, etc.
Bright Kitchen Bright Stove	Support three white detection (chef's clothing, chef's hat, mask detection), mouse detection, no gloves detection, garbage not covered detection, hot fire away from people
Fire Fighting	Support flame, smoke, fire fighting facilities, debris stacking points, etc.
Community	Support garbage overflow, garbage exposure, high-altitude throwing, battery car into shaving, fire-fighting facilities detection, etc.
Urban Management	Support off-store operations, travel suppliers, road occupancy, debris stacking, dirt accumulation, outdoor advertising, etc.
Production Safety Supervision	Support safety clothing, safety helmets, safety belts, work clothes, reflective clothing, masks, fire fighting facilities, flames, smoke, etc.
Gas Station	Support static line alarm, unloading oil pipe detection, oil pipe breaking, oil machine side cover opening, liquid leakage, etc.



Head-quarter: Chongqing Huifan Technology Co., Ltd.

📍 D-13, Dongli International Building Longtousi, Yubei District, Chongqing, China.

Branch: Shenzhen BIO Technology Co., Ltd.

📍 Room 301-305, No.30, Jianlong Industrial Zone, Henggang, Longgang District, Shenzhen

@ info@hfctv.com

📺 Huifan Technology Co.,Ltd

f Huifan Technology

🐦 HF\_Security

in Chongqing-huifan-technology



YouTube