

## Face Recognition Terminal Series

2023





# HF-X05

## Face Recognition Series



### SPECIFICATIONS

<b>Operating System</b>	Android 11
<b>Display</b>	5-inch 1280*720 touch screen
<b>Hardware</b>	CPU : MT8768, Octa-core 2.3GHz 2GB
<b>Camera</b>	5.0M (RGB Camera); 2.0M (Infrared Camera )
<b>Storage</b>	RAM : 2G (Optional 4G or more) ROM : 16GB (Optional 32G or more)
<b>Battery</b>	Support DC 4.3V 3000mAh
<b>Interface</b>	Wiegand, 26/34/37/56/64/input&outputRS232/RS485 Power, Supported Pin Ports, DC port, Micro USB*1 , POE、SIM、 USB 2.0、
<b>Communication</b>	2G,3G,4G Wi-Fi, GPS, TCP/IP , Bluetooth 5.0
<b>Card Slots</b>	SIM card*1,
<b>Product Function</b>	Fingerprint recognition, RFID

## HF-X05 Face Recognition Terminal

HF-X05 is one of best selling Android time attendance and access control device in HFSecurity. 5" touch screen, communication by Ethernet, 4G and WIFI, with fingerprint and RFID card recognition. You can check real time data in software, also we will offer free SDK for further development and 3rd part access control door lock function. It's widely use for company,government, banking, education, etc.



# HF-X05

Iris recognition terminal



## SPECIFICATIONS

<b>Operating System</b>	Android 11
<b>Display</b>	5-inch 1280*720 touch screen
<b>Hardware</b>	CPU : MT8768, Octa-core 2.3GHz 2GB
<b>Recognition Distance</b>	15-42CM
<b>Storage</b>	RAM : 2G (Optional 4G or more) ROM : 16GB (Optional 32G or more)
<b>Battery</b>	Support DC 4.3V 3000mAh
<b>Interface</b>	Wiegand, 26/34/37/56/64/input&outputRS232/RS485 Power, USB2.0 Supported Pin Ports, DC port, Micro USB*1 , POE、 SIM
<b>Communication</b>	2G,3G,4G Wi-Fi, GPS, TCP/IP , Bluetooth 5.0
<b>Card Slots</b>	SIM card*1,
<b>Product Function</b>	Fingerprint recognition, RFID

## HF-X05 Iris recognition Terminal

HF-X05 is one of best selling Android time attendance and access control device in HFSecurity. 5" touch screen, communication by Ethernet, 4G and WIFI, with fingerprint and RFID card recognition. You can check real time data in software, also we will offer free SDK for further development and 3rd part access control door lock function. It's widely use for company,government, banking, education, etc.



# RA08

## Face Recognition Series

### SPECIFICATIONS

<b>Operating System</b>	Android 11
<b>Display</b>	8-inch HD 1280*800 IPS Full view angle touch screen
<b>Hardware</b>	CPU: Quad-core 1.8GHz; 2GB RAM+16GB ROM
<b>Camera</b>	2.0MP RGB camera+1.3MP infrared camera, with LED filling light
<b>Facial Data Capacity</b>	Local 50,000 face data capacity
<b>Face Recognition Function</b>	Mask detection, stranger detection, live body detection
<b>Protection Level</b>	IP 65 Ingress Protection Level
<b>Interface &amp; Communication</b>	Wi-Fi, Bluetooth, USB type-A, RJ45, Wiegand in/out put, relay output, RS232
<b>Optional Function</b>	4G, fingerprint scanner, QR code scanner, HDMI interface



## RA08 Face Recognition Terminal

RA08 is HFSecurity newest 8-inch dynamic dual face live scan time attendance access control with Android 7 OS, supports Ethernet and WIFI connection.

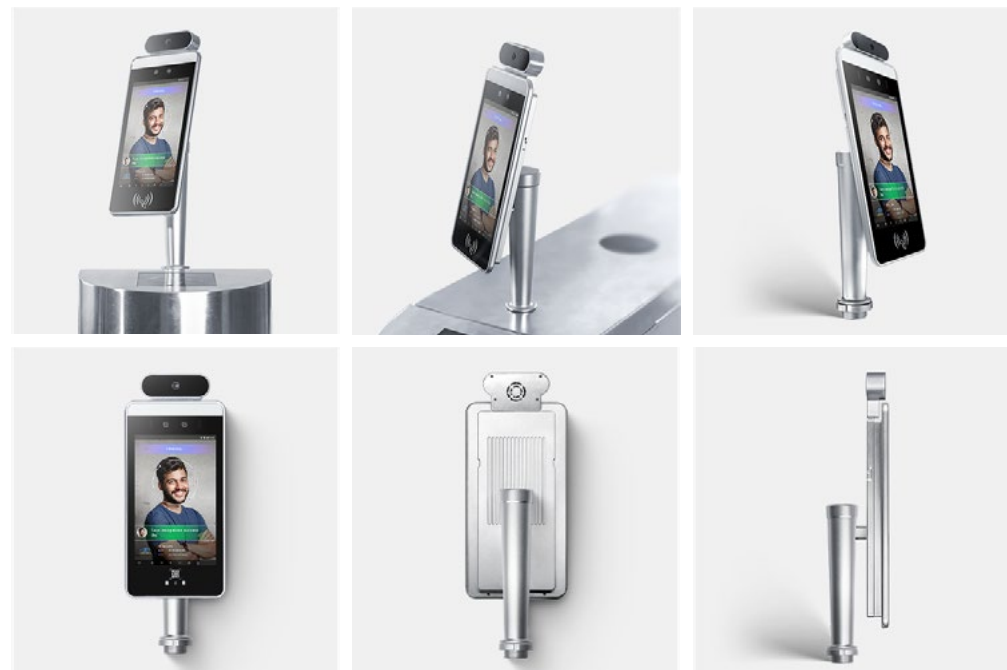


# RA08T

## Face Recognition Series

### SPECIFICATIONS

<b>Operating System</b>	Android 11.0
<b>Display</b>	8-inch HD 1280*800 IPS Full view angle touch screen
<b>Hardware</b>	CPU: Quad-core 1.8GHz; 2GB RAM+16GB ROM
<b>Camera</b>	2.0MP RGB camera+1.3MP infrared camera, with LED filling light
<b>Facial Data Capacity</b>	Local 50,000 face data capacity
<b>Face Recognition Function</b>	Mask detection, stranger detection, live body detection
<b>Temperature Sensor</b>	Built-in Heimann temperature module
<b>Interface &amp; Communication</b>	Wi-Fi, Bluetooth, USB type-A, RJ45, Wiegand in/out put, relay output, RS232
<b>Optional Function</b>	4G, fingerprint scanner, QR code scanner, HDMI interface



## RA08T Face Recognition Terminal

The RA08T is the hottest selling face recognition terminal in the HFSecurity biometric series. Equipped with Android 7 operating system, it supports intelligent algorithms for face recognition and has a built-in temperature measurement module to detect the user's body temperature in real time;



# RA08T-P

## Face Recognition Series

### SPECIFICATIONS

<b>Operating System</b>	Android 11.0
<b>Display</b>	8-inch HD 1280*800 IPS Full view angle touch screen
<b>Hardware</b>	CPU: Quad-core 1.8GHz; 2GB RAM+16GB ROM
<b>Camera</b>	2.0MP RGB camera+1.3MP infrared camera, with LED filling light
<b>Facial Data Capacity</b>	Local 50,000 face data capacity
<b>Face Recognition Function</b>	Mask detection, stranger detection, live body detection
<b>Temperature Sensor</b>	Built-in Heimann temperature module
<b>Palm Print Recognition</b>	Palm print recognition support
<b>Interface &amp; Communication</b>	Wi-Fi, Bluetooth, USB type-A, RJ45, Wiegand in/out put, relay output, RS232
<b>Optional Function</b>	RFID card reader, QR code scanner



## RA08T-P Face Recognition Terminal

The RA08T-P is an upgraded version of the RA08T. In addition to facial recognition, card reading and temperature detection, a palm print recognition module has been added to further enhance its security performance in terms of biometrics; the RA08T-P is suitable for a variety of projects requiring identity verification, such as government, hospitals, schools, communities, etc.

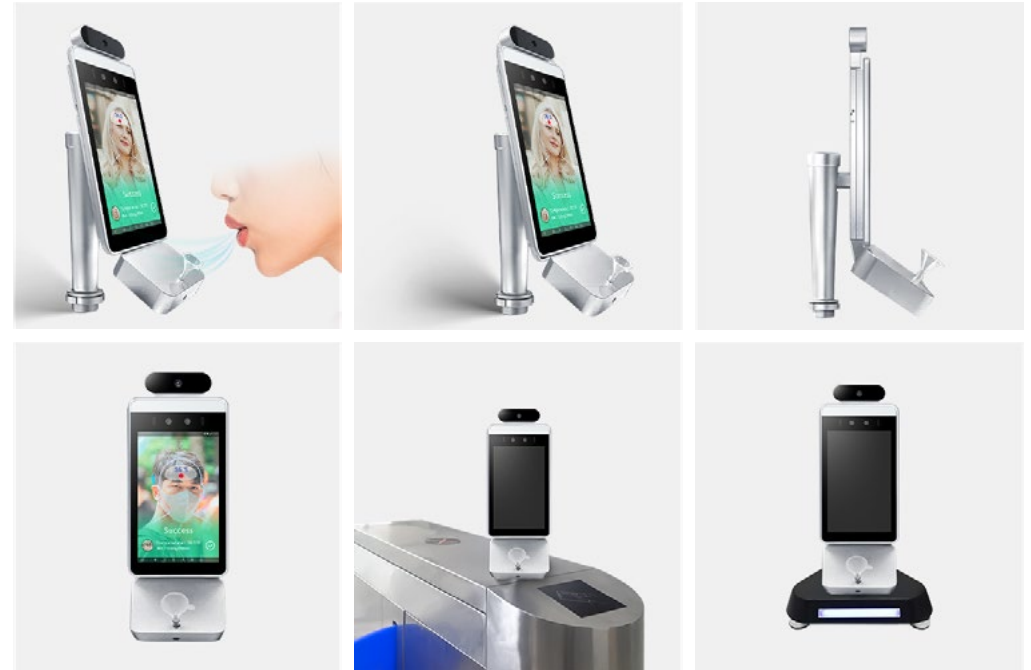


# RA08T-A

## Face Recognition Series

### SPECIFICATIONS

<b>Operating System</b>	Android 11
<b>Display</b>	8-inch HD 1280*800 IPS Full view angle touch screen
<b>Hardware</b>	CPU: Quad-core 1.8GHz; 2GB RAM+16GB ROM
<b>Camera</b>	2.0MP RGB camera+1.3MP infrared camera, with LED filling light
<b>Facial Data Capacity</b>	Local 50,000 face data capacity
<b>Face Recognition Function</b>	Mask detection, stranger detection, live body detection
<b>Temperature Sensor</b>	Built-in Heimann temperature module
<b>Alcohol Detection</b>	Built-in alcohol detection module
<b>Interface &amp; Communication</b>	Wi-Fi, Bluetooth, USB type-A, RJ45, Wiegand in/out put, relay output, RS232
<b>Optional Function</b>	4G, fingerprint scanner, QR code scanner, HDMI interface



## RA08T-A Face Recognition Terminal

RA08T-A is a multi-functional biometric time attendance access control terminal, which not only supports facial recognition, temperature detection, but also adds an alcohol sensor to detect the user's blood alcohol content.

RA08T-A has a variety of styles, supporting wall-mounted, desktop, gate and other installation methods, suitable for a variety of places that need to use personnel management, access control.



# FR05

## Face Recognition Series

### SPECIFICATIONS

<b>Operating System</b>	Android 11
<b>Display</b>	5-inch HD 1280*800 IPS Full view angle touch screen
<b>Hardware</b>	CPU: Quad-core 1.9GHz; 2GB RAM+16GB ROM
<b>Camera</b>	2.0MP RGB camera+1.3MP infrared camera, with LED filling light
<b>Facial Data Capacity</b>	Local 50,000 face data capacity,
<b>Interface</b>	RS232, NC, NO and COM, Wiegand 26/34 input/output
<b>Communication</b>	2.4GHz Wi-Fi, Bluetooth
<b>Optional Function</b>	4G, fingerprint scanner, QR code scanner, HDMI interface



## FR05 Face Recognition Terminal

The FR05 is a compact Android facial recognition terminal with Android 11 operating system that uses dual RGB+IR cameras for face recognition, mask detection, stranger detection and live recognition; the FR05 also supports IC/ID card recognition and fingerprint recognition, making time and attendance more convenient and fast.





# FR05M

## Face Recognition Series

### SPECIFICATIONS

<b>Operating System</b>	Linux
<b>Display</b>	4.3-inch 480*272 touch screen
<b>Hardware</b>	32MB RAM + 4GB ROM
<b>Camera</b>	1.0MP RGB camera+1.0MP infrared camera
<b>Data Storage Capacity</b>	5000 facial data, 3000 fingerprint data, 3000 palm print data, 5000 passwords, 5000 cards
<b>Recognize Distance</b>	0.5m-4.0m (open live identification)
<b>Live Body Detection</b>	Double camera anti-counterfeiting, eliminate all kinds of photos, videos on various carriers fraud
<b>Interface &amp; Communication</b>	USB type-A*1(support data export), DC port*1, Wiegand 26/34 output(reserved for expansion RS485), Wired TCP/IP, Support C/S LAN communication
<b>Product Function</b>	Face recognition, palm print recognition, fingerprint recognition, password, ID card recognition (expandable IC card or other card types)



## FR05M Face Recognition Terminal

FR05M is a Linux operating system attendance access terminal with multiple identification methods, it supports 5 types of authentication methods: face, fingerprint, palm print, card and password, and supports 10 combinations of authentication methods; FR05M uses RGB & IR dual camera identification, supports fast identification within 0.5~4 meters, and supports nighttime fill light, mask Detection and live body detection function. FR05M can record 5000 groups of identity information and 1,000,000 attendance records, and supports data export.



# FR05P

## Face Recognition Series



### SPECIFICATIONS

<b>Operating System</b>	Android 11
<b>Display</b>	IPS 5.0-inch LCD; Resolution 720*1280
<b>Hardware</b>	2GB RAM + 16GB ROM
<b>Camera</b>	200W resolution
<b>Face Algorithm</b>	Absentee/face recognition speed 1 sec.
<b>Recognize Distance</b>	0.2m - 0.5m
<b>Product Function</b>	Support palm print / palm vein / swipe card (IC, ID) / password authentication, optional face recognition
<b>Interface &amp; Communication</b>	Wegen Support Wergen 26/34 adaptive transmissionDoor Opening Signal COM/NO/NC U S B 2-way USB interfaceSerial Port RS485 Signal WiFi2.4G/Bluetooth5.0/Ethernet(optional 4G)
<b>Palmprint Algorithm</b>	Read speed 800 ms
<b>Overall Dimension</b>	150mm*150mm*15mm

## FR05P Face Recognition Terminal

The palm print/palm vein recognition access control integrated machine is a palm print/palm vein recognition attendance and accesscontrol terminal product. Non contact recognition of palm print/palm vein, with high accuracy and excellent algorithm performance. The accuracy rate of binocular live detection is 99 The 5% palmprint algorithm has a reading speed of 800 milliseconds and can effectively Face defend against various forms of attacks such as photos, videos, and electronic screen images. Supporting multiple combination methods such as palm print/palm vein recognition, card swiping, face and password authentication, it can be used in commercial real estate, corporate buildings, hotels, governments, industrial parks, industrial parks, campuses, small businesses, construction sites, shops, and other places. Meet the palm print recognition needs of customers in various scenarios.



# FR07

## Face Recognition Series

### SPECIFICATIONS

<b>Operating System</b>	Android 11
<b>Display</b>	7-inch 1024*600 touch screen
<b>Hardware</b>	CPU: Quad-core 2.0GHz, 2GB RAM+16GB ROM
<b>Camera</b>	2.0MP RGB+IR dual camera
<b>Data Storage Capacity</b>	Local 50,000 face
<b>Face Recognition Function</b>	Mask detection, stranger detection, live body detection
<b>Interface</b>	Audio output*1, USB type-A*1, RS232*2, Wiegand input/output, OTG interface*1
<b>Communication</b>	2.4GHz Wi-Fi, bluetooth, 4G(optional)
<b>Product Function</b>	Fingerprint recognition, RFID



## FR07 Face Recognition Terminal

FR07 is a seven-inch slim face recognition terminal with wide dynamic dual camera anti-counterfeiting, supporting stranger detection, mask recognition and live body detection, it's also support fingerprint recognition and M1 card recognition. FR07 is suitable for office areas, hotels, channel gates, office buildings, schools, shopping malls, stores, communities and other places that need to use face department access control systems.

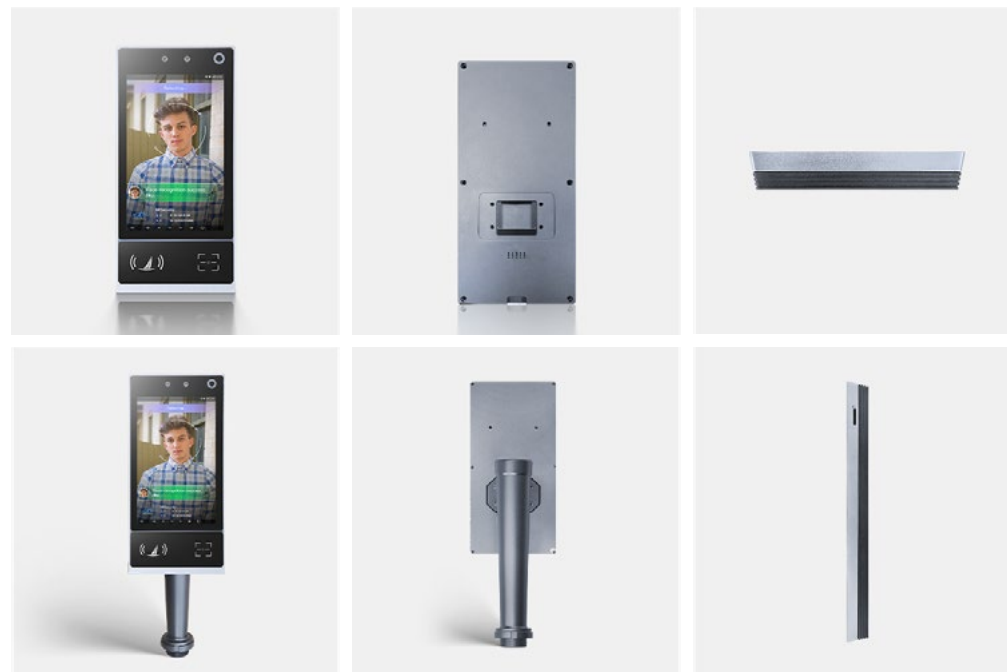


# FR08

## Face Recognition Series

### SPECIFICATIONS

<b>Operating System</b>	Android 11
<b>Display</b>	8-inch 1024*600 touch screen
<b>Hardware</b>	2GB RAM+16GB ROM
<b>Camera</b>	2.0MP RGB+IR dual camera
<b>Data Storage Capacity</b>	Local 50,000 face
<b>Face Recognition Function</b>	Mask detection, stranger detection, live body detection
<b>Interface</b>	Audio output*1, USB micro*2, RS232*2, Wiegand input/output, OTG interface*1
<b>Communication</b>	2.4GHz Wi-Fi, bluetooth, 4G(optional)
<b>Product Function</b>	RFID, QR code scan
<b>Protection Level</b>	IP65
<b>Optional</b>	Optional battery can be added for outdoor use



## FR08 Face Recognition Terminal

FR08 is the new facial recognition access control terminal launched by HFsecurity in 2022, which is an 8"HD touch screen with dual camera facial recognition, IC card recognition, 1D/2D code scanning function. FR08 supports various functions such as attendance management, access control, stranger detection, mask detection, etc. FR08 has IP65 intrusion protection level and can work normally under the condition of raindrop splashing, so it can be used outdoors with confidence.

# SUPPORT ODM/OEM





**Head-quarter: Chongqing Huifan Technology Co., Ltd.**

◆ D-13,Dongli International Building Longtousi, Yubei District, Chongqing, China.

**Branch: Shenzhen BIO Technology Co., Ltd.**

◆ Room 301-305,No.32, Jianlong Industrial Zone, Yuanshan, Longgang District, Shenzhen, China.

Info@hfctv.com

Huifan Technology Co.,Ltd

Huifan Technology

HF\_Security

Chongqing-huifan-technology

